

Twickenham & Richmond TRIBUNE

Contents

- TickerTape
- COVID-19
- Hampton Court Palace 300 years ago
- We The People
- River Crane Sanctuary
- Election 2022: Lib Dems win with only 47.6% turnout
- Home Goal
- Twickers Foodie
- Review
- WIZ Tales - Greenland
- Events coming up in Church Street Twickenham
- Traveller's Tales
- Now Here's Some Good News!!!!
- Strawberry Hill House Flower Festival
- Lucy walks 100km

Contributors

- Simon Fowler
- TwickWatch
- Lucilius
- Sammi Macqueen
- Metropolitan Police
- Green Party
- Alison Jee
- Mark Aspen
- Richmond Shakespeare Society
- World InfoZone
- Shona Lyons
- Doug Goodman
- Bruce Lyons
- Strawberry Hill House
- Coeliac UK
- WHO
- LBRuT

Editors

Berkley Driscoll
Teresa Read



6th May 2022



TickerTape - News in Brief

Rail disruption in Barnes area this weekend - Saturday 7 and Sunday 8 May

The lines in the Barnes area will be closed all weekend due to maintenance work.

Saturday

- London Waterloo to Reading services will be revised and will be diverted between Clapham Junction and Twickenham via Kingston. These services will call additionally at Kingston.
- London Waterloo to Windsor services will be revised. These services will be diverted between Clapham Junction and Twickenham via Kingston calling at all stations.
- London Waterloo to Weybridge via Staines services will be revised and will start from Kew Bridge.
- London Waterloo to London Waterloo via Wimbledon and Kingston services will be revised and will run between Kingston and Richmond only.
- London Waterloo to Shepperton services will be revised.
- Buses will run between Clapham Junction and Twickenham, calling at all stations except St Margarets.
- Buses will run between Clapham Junction and Kew Bridge.

Sunday

- London Waterloo to Reading services will be revised and will be diverted between Clapham Junction and Twickenham via Kingston. These services will call additionally at Wimbledon and Kingston.
- London Waterloo to Windsor services will be revised. An hourly service will be diverted between Clapham Junction and Twickenham via Kingston calling at all stations.
- An hourly service will run between Richmond and Windsor.
- London Waterloo to London Waterloo via Wimbledon and Kingston services will be revised and will run between Kingston and Richmond only.
- London Waterloo to Woking via Staines services will start from Kew Bridge.
- The afternoon and evening London Waterloo to Kingston via Hounslow services will not run.
- Buses will run between Clapham Junction and Twickenham, calling at all stations except St Margarets.
- Buses will run between Clapham Junction and Kew Bridge.

skyelectrical

Replacing your halogen recessed lights with LEDs will:

- ✓ SAVE ENERGY
- ✓ SAVE YOU MONEY
- ✓ PROVIDE BETTER LIGHTING

So...

- ✓ CALL US TODAY FOR A FREE HOME ASSESSMENT AND QUOTE

For a timed appointment please call Sky Electrical on 020 8894 1799

22 Fifth Cross Road, Twickenham, Middlesex, TW2 5LF

www.skyelectrical.co.uk



020 8894 1799

info@skyelectrical.co.uk

COVID-19

Teresa Read

World Health Organization

Weekly Epidemiological Report 4 May 2022

Globally, the number of new COVID-19 cases and deaths has continued to decline since the end of March 2022.

During the week of 25 April through 1 May 2022, over 3.8 million cases and over 15 000 deaths were reported, decreases of 17% and 3% respectively, as compared to the previous week.

However, an increase in the number of new weekly cases was reported from the African Region (+31%) and the Region of the Americas (+13%), and the number of new weekly deaths increased in the South-East Asia Region (+69%) largely due to a delay in the reporting of deaths from India

As of 1 May 2022, over 500 million confirmed cases and over six million deaths have been reported globally

Total cases Locally

Richmond upon Thames	66,400 (65,836 previous week)
Kingston upon Thames	59,810 (59,278 previous week)
Hounslow	94,550 (93,832 previous week)
Wandsworth	116,593 (115,708 previous week)

COVID IN THE NEWS

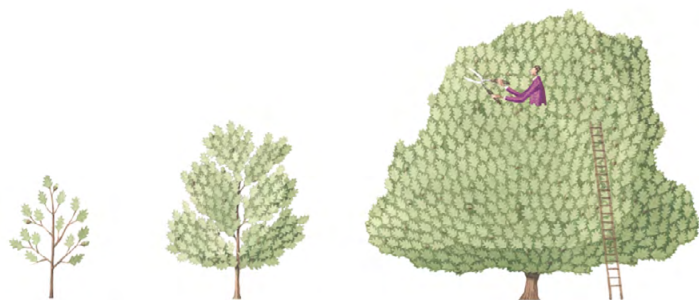
Reuters, 6 May 2022: UK police investigating Labour leader Starmer over lockdown rule-breach

Nature, 6 May 2022: Are COVID surges becoming more predictable? New Omicron variants offer a hint

World Health Organization, 5 May 2022: 14.9 million excess deaths associated with the COVID-19 pandemic in 2020 and 2021

Euronews, 4 May 2022: Central Chinese City of Zhengzhou imposes new COVID movement curbs

JKFNEWS, 4 May 2022: Western Australia hits fresh Covid peak with 9,782 new cases reported days after restrictions eased

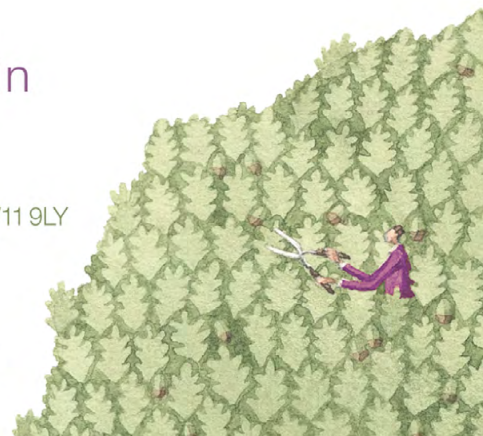


The Tree Agency

darryl parkin

The Treehouse
25 King Edwards Grove
Teddington, Middlesex TW11 9LY
Telephone 020 8274 0107
Mobile 07960 123580
Fax 020 8274 0119
info@thetreeagency.co.uk
www.thetreeagency.co.uk

The Tree Agency



Hampton Court Palace 300 years ago

By Simon Fowler

The antiquarian Ralph Thoresby visited the Palace in July 1712 and wrote:

My kind friend, Mr. Boulter, brought his chariot from Chelsea, purposely to carry me to see Hampton; Court : having passed through the city, we passed the Gravel-pits, and had a clear air, (whither the consumptive are sent by the physicians,) and delicate pleasant country, to Acton and Brentford; the Duke of Somerset's seat at Sion House looked most charmingly, and was the first time I had observed the lime-trees in the avenues cut in a pyramidal form, even to a great distance from the palace, which looked very noble ; thence through Thistleworth and Twitnam, a very pleasant road; by the highway side is a monument, erected for the memorable Mrs Withrow who was permitted to be there interred; thence through the park to Hampton; Court, a noble palace indeed, fit for the reception of the greatest monarch, especially the new apartments, lately added by King William, who delighted much in the situation, being near the river, so that the gardens, &c. are most charming; nothing can be devised more agreeable ; in some parts, that front the new palace, open and spacious, adorned with noble statues of brass (amongst which, the famous Gladiator from St James Park).

The park adjoining (replenished with deer, as the river with swans) is separated from the spacious gardens, by curious iron balustrades, painted and gilt...the canals seemed to fall short at present of the grandeur of the rest, there not being due care taken to keep the waters from stagnating.

We entered into the Royal palace, The staircase is admirably painted, and the several apartments answerably furnished with the nobles and richest hangings. I was best pleased with those that there the needlework of the late most pious and exemplary Queen Mary and of her maids of honour; there were also pictures of monarchs and grandees, done by the greatest masters; but the celebrated cartoons, done by the famous Michael Angelo, Raffaele, and Cæsar's Triumph, exceed the rest, though that of King William on horseback, by Sir Godfrey Kneller, is a master-piece.

After we had refreshed ourselves we returned another road on the south side of the river thought a very pleasant country to Richmond where we lodged. We left the coach at Ham, and walked to the late Duke of Lauderdale's seat there, now the Earl of Dysart's, a very noble palace. The spacious court before the more ancient front of the hall pleased me best, having a vast number of the busts of the Roman emperors etc in marble, each in his distinct niche in the wall.

Taken from Joseph Hunter (ed), *The Diary of Ralph Thoresby, Vol II* (1830), pp132-134.



Credit Orleans House Gallery LDORL 000275

We The People – We The People – We The People

By:TwickWatch

On 5 May 2022 “We The People” voted by a significant majority to return the Liberal Democrat party to power. The Green Party increased their vote by one but embarrassingly, the Conservatives have been left with only one seat. For the next four years the Liberal Democrats will govern with an overwhelming majority. It can be surmised some voters expressed a view on central government and not the management of important local issues. With such a huge majority, it is important more than ever, that the Liberal Democrats should be held to account with only six councillors to have the ability to “challenge” them on policies.

It will be interesting to see how the existing merger with Wandsworth, now under Labour control and for which no one was consulted and given the opportunity to vote on, will now fair. The Liberal Democrats profess to be “the listening party” but appear to have a poor record on transparency when it comes to public consultations. It is about time they consulted “We The People” on a formal consultation policy to be implemented published. It is up to “We The People” to push for this to be formulated and adopted in the interests of transparency, accountability, democracy and to ensure the huge majority is transparently applied and not open to the temptation of abuse through non-accountability.



Election	Overall control	<u>Conservative</u>	<u>Lib Dem</u>	<u>Labour</u>	<u>Green</u>	<u>Ind.</u>
1964	Conservative	41	–	12	–	1
1968	Conservative	54	–	–	–	–
1971	Conservative	36	3	15	–	–
1974	Conservative	36	10	8	–	–
1978	Conservative	34	18	–	–	–
1982	No overall control	26	26	–	–	–
1986	SDP–Liberal Alliance	3	49	–	–	–
1990	Liberal Democrats	4	48	–	–	–
1994	Liberal Democrats	7	43	2	–	–
1998	Liberal Democrats	14	34	4	–	–
2002	Conservative	39	15	–	–	–
2006	Liberal Democrats	18	35	–	–	1
2010	Conservative	30	24	–	–	–
2014	Conservative	39	15	–	–	–
2018	Liberal Democrats	11	39	–	4	–
2022	Liberal Democrats	1	48	–	5	–

(2002 boundary changes increased the number of seats by two)

Consultation and Engagement Policy

A policy should set out the council's commitments to consulting and engaging with residents so that their views inform decision-making and service development.

Richmond Council should be committed to providing genuine opportunities for the community to contribute to and inform the decisions, policies and services that most affect them.

It should transparently use the insight gathered from engagement activity to better understand local need, whilst also maintaining a continued conversation with communities and businesses about the things that matter most.

Engagement activity should be planned and delivered in accordance with the Standards set out in the published policy which itself will be formulated through a public consultation.

The doctrine of legitimate expectation (common law) infers a responsibility on local authorities to undertake consultation in situations where people have come to legitimately expect a process of consultation, particularly in circumstances where a withdrawal of a benefit would have significant impacts that would require consideration i.e. the withdrawal of a service.

Where a consultation is embarked upon it is expected that it is conducted properly in order to ensure a fair process.

Some examples of adopted and published policies can be found at links below to give an idea;

[Basildon Council](#)

[Bristol City Council](#)

[West Berkshire Council](#)

Best practice guidelines can be found at the [Local Government Association](#) website.

Not all councils consult on and then publish a policy document but "a listening council" such as Richmond professes to be, with a 48 to 6 majority could be tempted to "turn a deaf ear".

Transparency and a formal published policy would avoid accusations of ignoring citizen views on things such as the Richmond Riverside site.

Consultees in turn would be aware how their expectations will be met or otherwise with a reasoned explanation.



Imagine our surprise to see this Heron catch and swallow whole a large fish on The River Crane bank which some say looks like a 'Pike'. Good news to have fish thriving in our local river and sad to see plastic waste still also dumped in it.

We can help by picking up, safely, what we notice when out for a walk or join in with local groups who do regular supervised 'litter picks' and every little effort helps to make the environment better for all.

2022 is a crucial year for action on plastic, as The Government is going to be setting targets for

reducing plastic waste. According to Greenpeace: "Their plans aren't ambitious enough right now. We have to make them understand the scale of the problem." How? Greenpeace **have invited us to take part in The Big Plastic Count – the UK's biggest ever investigation into household plastic waste.** It kicks off this month and all we have to do is count our plastic waste for one week, **from 16 to 22 May.**

Look at the Video and information on the link below about how to get involved for Individuals, Schools, Businesses and Community groups: [Big Plastic Count](#)

No Mow May is a hard sell for some of our amazing Gardeners who will be looking forward to Chelsea and Open Gardens but hopefully there is an area that can be left for our wilder side! The benefits are the butterflies and others who visit the 'Weeds' and feed the birds for our delight and for the pollination so essential for all life. Pesticide Free Gardening still gives beauty and healthy growth without the harm to habitat.

Website: [River Crane Sanctuary](#) [Instagram](#)

"Beautiful as a Dandelion-Blossom golden in the green grass, this Life can be." Edna St Vincent Millay



Election 2022:

Lib Dems win with only 47.6% turnout

Teresa Read

On Thursday at the local election long-term Conservative councillor Cllr Geoffrey Samuel was re-elected once again for Hampton North. Cllr Samuel is a regular contributor to the Tribune with his monthly newsletter.

Cllr Samuel was recently chosen by one of the Tribune's contributors, TwickWatch, in his excellent article "We the People"

<https://twickenhamtribune.com/NEWS/TRT0285/TRTNews0285-WeThePeople.html>

where he mentioned Councillor Geoffrey Samuel, describing him as knowledgeable, dedicated, hard-working and an ideal councillor.

However, Geoffrey is also the only Conservative councillor to be elected this time, with ten losing their seats. Geoffrey can be considered the equivalent of the House of Commons "Father of the House", a life-long resident of the Borough who has many interesting stories to tell. It is hoped that the sometimes abrasive comments made by certain members of the current majority party are put to one side.

It seems that the turnout of voters for the election was down considerably which could be seen locally on Twickenham Green. During the previous election the queues were long but this time it was possible to vote almost immediately throughout the day and evening. It was also obvious that the Conservatives did not canvass on the Twickenham Riverside issue.

The Tribune has published details of literature and information sent out by the Liberal Democrats stating that nothing has been done on Twickenham Riverside for over forty years; however, improvements and Council investment in the area started during the 2002 administration and continued in following Council administrations elected in 2010 and 2014.

So the gardens which were opened during the Queen's Diamond Jubilee and all the work that followed over the years will be destroyed during the Queen's Platinum Jubilee as a result of this election.

Richmond Borough voter turnout 5th May 2022			
Ward	Eligible voters	Verified Total	Turnout
Heathfield	7,323	3,130	42.7%
Whitton	7,560	3,614	47.8%
West Twickenham	7,816	3,547	45.4%
St Margarets & North Twickenham	8,311	3,939	47.4%
South Twickenham	7,472	3,767	50.4%
Twickenham Riverside	7,840	3,694	47.1%
Hampton	7,353	3,650	49.6%
Fulwell & Hampton Hill	7,927	3,734	47.1%
Hampton Wick	8,073	3,954	49.0%
Teddington	7,947	3,907	49.2%
Hampton North	7,338	3,341	45.5%
North Richmond	7,571	3,504	46.3%
South Richmond	7,815	3,779	48.4%
Ham Petersham & Richmond Riverside	7,477	3,311	44.3%
East Sheen	7,496	3,845	51.3%
Mortlake & Barnes	8,237	3,925	47.7%
Kew	8,627	4,104	47.6%
Barnes	7,548	3,810	50.5%
Borough Wide Total	139,731	66,555	47.6%

Richmond upon Thames in May

Home Goal

By Lucilius

“Local” issues that the Richmond upon Thames electorate voted on:



Local issues that the Richmond upon Thames electorate didn't vote on:



Images by Klara Viskova and The Twickenham Riverside Trust

Police body worn video shown to members of public in first of such panels in the Met

Yesterday on the 5th May, members of the public attended the Met's first police encounter panel. People from across South West London attended the first in the Met's South West Basic Command Unit (BCU), which includes the boroughs of Wandsworth, Merton, Kingston and Richmond.

In this meeting the public watched footage recorded on Police body worn video (BWV) cameras while officers are on duty, and offered their views on what went well or what the Met could improve.

This time the panel watched a number of uses of Taser by police, with members of the Met's Taser training team on hand to answer any questions.

The panels are to be set up across 12 BCUs, and will comprise of independent community members, senior police officers and the Met Federation or appropriate staff support associations.

The main purpose of these panels is to improve public trust and confidence in the Met, by allowing the community to offer appropriate scrutiny and feedback of policing encounters. This is part of our programme to be transparent and build trust and confidence in our community.

The panels aim to incorporate the community experience of policing, use these experiences to improve the way officers understand interactions with the public and allow local communities to review broader aspects of local policing practice.

If you are interested in joining one of these panels, we're particularly interested in recruiting members from those communities that are most impacted by policing encounters (especially those aged under 25), but we welcome applications from all community members.

See more information and how to join one of these panels at:

<https://www.met.police.uk/police-forces/metropolitan-police/areas/about-us/about-the-met/pep/police-encounter-panels/>



**METROPOLITAN
POLICE**

Ham Parade Market takes place this Saturday

The Ham Parade Market returns this weekend. Support your local market and traders and visit the market this Saturday 7 May, from 10am to 2pm.

All profits from the Ham Parade Market go back into improving Ham Parade and making the local high street a success.

With an amazing selection of food, drinks and much more there's something for everyone. The market takes place on the first Saturday of each month.



Richmond Libraries to host teen author event with Lisa Williamson

In celebration of Cover Story, Richmond Libraries' annual pick of the best teen reads for 11 to 14 year olds, actor and author Lisa Williamson will be joining us to talk about her latest book, the dramatic First Day of My Life.

As well as writing the critically acclaimed and hugely popular The Art of Being Normal, All About Mia, and Paper Avalanche, you may also recognise Lisa from lots of television commercials, often playing the role of 'dishevelled mums'.

Join the multitalented Lisa for a lively talk, Q&A session and book signing at the Richmond Library Annexe in Richmond on Tuesday 10 May. The event takes place from 7 to 8pm with free entry for all residents. [Find out more](#)



The May Arts Richmond newsletter is now available

The Arts Richmond May newsletter is full of news and events happening across the borough throughout the month.

There is plenty to keep you busy both out and about in the borough and from the comfort of your own home throughout May.

If you are interested in becoming a member and supporting Arts Richmond, contact info@artsrichmond.org.uk. [Read May's newsletter](#)



Festival of Trees begins this weekend at Terrace Gardens Richmond

What do trees mean to you? Join us this Saturday (7 May) for a walk exploring the significance of trees to different cultures.

This event is the first of our nature's kaleidoscope summer programme of activities in collaboration with [Let's Go Outside and Learn](#) and [Multicultural Richmond](#).

What significance do trees have in your life? Share your traditional tales and folklore of trees at this weekend's Festival of Trees. The walk begins at 10.30am, meeting at the glasshouse on Petersham Road.

For more information email Let's Go Outside and Learn on outdoor.learning@outlook.com or visit their [Facebook page](#).



The OSO Arts Centre hosts its annual Spring Fair

The OSO Art Centre will be hosting its annual Spring Fair on Saturday 14 May 2022 where residents can pick up a whole host of artisan products.

Included in the many stalls will be A Fox in Kew's felt flowers, Elisa Walker's hand-croched gifts and Tipperleyhill's quirky animal prints. Whether you're after lace, silk or cashmere; cushions, candles or flowers, the Spring Fair has it all!

The café will be open with smoked salmon and cream cheese bagels, avocado on toast and fruit compote included on our brunch menu. Meet the OSO box office team and have a go at the lucky dip for your chance to win discounted theatre tickets and drinks at the bar and 2-for-1 happy hour Spring Spritzer Cocktails during the last hour of the fair.

Entry is free. For more information visit the [OSO Art Centre website](#).



Greens beat the Conservatives to become the official opposition in Richmond Borough as the party celebrates record results

Richmond & Twickenham Green party is celebrating after seeing five councillors elected to Richmond Council. It means they have overtaken the Conservatives and become the official opposition on the Council.

The Greens gained seats in South Richmond and Mortlake & Barnes Common, both previously held by the Conservatives.

Richard Bennett, Leader of the Richmond & Twickenham Green Group said:

“Greens across the country are working hard to create fairer, greener communities for residents and they like what they see.

These new council seats in Richmond and Twickenham demonstrate that residents here have been impressed by the work done by Greens and the grown-up politics that we bring by working collaboratively with other parties.”

Andree Frieze, Deputy Leader of the Richmond & Twickenham Green Group said:

“The Greens have been making gains across the country and we are delighted that residents in Richmond and Twickenham have trusted us to hold the Liberal Democrats to account by electing five local Green councillors.

“As the official opposition, we will push the new administration to take speedier action to cut carbon emissions in our borough, find ways to use the budget surplus to support residents hit by the cost of living crisis and take radical action to get more people walking and cycling to reduce air pollution and traffic on our congested roads.”

The five Green Party councillors in Richmond are:

Richard Bennett for South Twickenham, Niki Crookdake for Mortlake & Barnes Common, Andree Frieze for Ham, Petersham & Richmond Riverside, Chas Warlow for South Richmond and Caroline Wren for Fulwell & Hampton Hill.



EASY BY CHRIS BABER - AND YES, IT IS EASY!

Not that confident in the kitchen? Perhaps one of your offspring is heading to uni soon and starting cooking for themselves? If so, I've got the perfect answer: Chef Chris Baber's debut cookbook, **Easy**, published last month by Ebury at £16.99 for a softback, with great photography by Haraala Hamilton.



Chris is perhaps known to many as the chef consultant for a well-known high street store chain, but he's able to boast a sterling track record at the stove. Aged 25 he won BBC 1's Yes Chef, where his potential was noted by Michelin-starred chef Atul Kochhar, who invited Chris to train alongside him in his Mayfair restaurant.



Lockdown gave Chris the opportunity to create 96 simple, delicious, home-cooking recipes for **Easy**. What I particularly like about the book is that it starts with some really solid background information about key spices and other ingredients, equipment and store cupboard essentials. With no fancy language, unattainable ingredients or extortionately expensive kitchen equipment, His aim is simple: no matter who you are, you can make a fuss-free, tasty dinner. From Spicy Prawn Tostadas and Honey and Harissa Spatchcock Chicken to Spiced Veggie Pilaf with Fried Halloumi and Summer Strawberry and Raspberry Crumble. Easy is a great cookbook for making mouthwatering meals without spending hours in the kitchen.

Recipes are divided into six sections: Brunch, Family Faves, Fakeaway, One Pan, Feeding a Crowd and Sweet. All are accompanied by handy tips, tricks, kit lists and store cupboard essentials.

Here are a couple of recipes from **Easy** to demonstrate what a simple, speedy and delicious repertoire is in store for readers.

Pesto Baked Eggs (Serves 1 / 20 minutes)

"This tasty little number goes to show you can make a belter of a brunch with a few simple store cupboard ingredients in no time. If you have any fresh herbs lying around like basil or parsley, throw them on at the end. If you can't get any canned cherry tomatoes, a can of chopped tomatoes works just as well."

- 1 tbsp extra virgin olive oil, plus extra to serve
- 1 garlic clove, sliced
- 400g can cherry tomatoes



- 3 tbsp basil pesto
- 2 eggs
- Salt and pepper
- Bread, to serve

1. Heat the oil in a small frying pan over a medium–high heat.
2. Fry the garlic for 30 seconds, then stir in the tomatoes and 2 tbsp of the pesto and season with salt and pepper.
3. Bring to the boil, then reduce the heat to medium, cover loosely and simmer for 8–10 minutes until you have a fairly thick sauce.
4. Use a spoon to make 2 wells in the tomatoes. Crack an egg into each well, cover and cook for about 5 minutes or until the whites are set and the yolks are still soft.
5. Take off the heat, spoon over the remaining pesto and drizzle with a little more oil. Serve with bread to dip in the egg yolk and sauce.

Summer Strawberry & Raspberry Crumble (Serves 6-8 / 40 minutes)

This crumble is a perfect summer dessert. The recipe comes from one of my best mates and is something we always have round his house after dinner. I love the sweet, cakey layer the ground almonds give between the fruit and crumble. Serve it warm with a good dollop of clotted cream. Bliss!

- 300g strawberries
- 300g raspberries
- 100g light muscovado or caster sugar
- 100g ground almonds
- 175g plain flour
- 75g cold butter, diced
- 100g flaked almonds
- Clotted cream, to serve



1. Preheat the oven to 200°C/180°C fan.
2. Remove the stalks from the strawberries and cut any larger ones in half. Put the strawberries and raspberries into an ovenproof dish. Scatter over 1 tbsp of the sugar, then scatter over the ground almonds.
3. Put the flour and butter into a mixing bowl. Use your fingertips to rub the butter into the flour until it resembles breadcrumbs, then stir in the remaining sugar and flaked almonds.
4. Scatter the mixture evenly over the fruit.
5. Bake for 30–35 minutes until lightly golden.
6. Serve with clotted cream.

Recipes extracted from **Easy** by Chris Baber, out now.

MY LOCAL KITCHEN: YOUR LOCAL KITCHEN

You know those days when you're busy and/or not inclined to cook, want to eat something rather special, but the idea of getting a takeaway doesn't appeal? Well folks, I now have the solution for anyone in SW London...it's called **My Local Kitchen** and it's great!

Offering a fresh approach to at-home dining, this relatively new business offers delicious meals, created by Michelin-starred chef Garry Hollihead, delivered straight to your door. The meals just need to be heated and served - and hey presto, you have a delicious meal! To maximise freshness, dishes are made to order and delivered the same day. Because they come straight from the kitchen to customers' tables, they're not frozen and don't use preservatives. My Local Kitchen was started by Joel Featherman and his business partner Michael Stobbs, who share a passion for good food dating back to their university days. These aren't to be confused with meal kits: they're foolproof, delicious and so easy to heat and enjoy at home. What I really like about the service is the fact that the food is delivered in eco-friendly cardboard and wooden packaging, and all you need to do is pop the packs into the fridge till you need to heat them. Full instructions to each dish are given on a cleverly attached postcard.

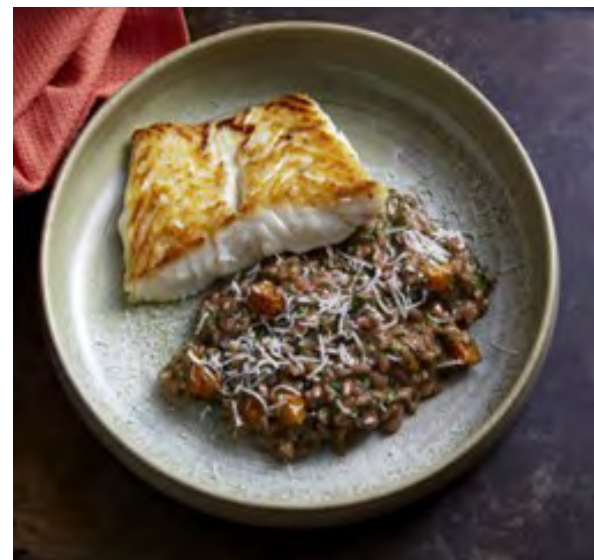


Garry has designed a seasonally changing menu of meat & poultry, fish and plant based dishes - comprising starters, mains, sides and desserts. The menu includes dishes such as Persian Spiced Chicken, with Heritage Carrot and Banana Shallots. The range is ideal for family meals and at home entertaining. Wines are also available to be included with the order - and well priced - with a selection from £12 a bottle.

When we recently tried the service, we started with **Keen's Cheddar Cheese Soufflé** with cheese and chive sauce. (£5.50 a portion). It was really delicious, a very generous portion. The only - very slight - negative, was that the sauce was a tad heavy on the flour for my taste, but I can understand the need to thicken it enough to allow it to travel well.

Next was **Roast Fillet of Cod with Red Wine and Butternut Squash Risotto** (£12 a portion). Another great success and again, more than enough for two hearty appetites. We had a side order of Zesty Fine Green Beans with Lemon, Turmeric and Chilli (£5.50 for a double portion) which complemented the delicious fish and the ultra smooth risotto perfectly.

Having the proverbial 'eyes bigger than our tumms' when choosing our food, the puddings had to wait, as we were



both fully replete. These stayed in the fridge till the next day, when we pigged out on the wonderful Banana & Raisin Puddings with Toffee Sauce (£4 a portion)

All dishes can be eaten within 48 hours of delivery, but as everything is prepared to order, you can be assured that it is really fresh. As it's a newly launched company, the delivery area is still expanding. My Local Kitchen covers West and South West London and has already expanded to include the TW9 & TW10 postcodes but is looking to expand further soon. Do have a look at the website and contact them, as they are keen to expand and will do their utmost to arrange to deliver to you. They're also happy to cater for parties, celebrations and club events, and Joel and Michael are keen to support community events too.



Deliveries are three days a week - check the website for full info and the contact details are there if you aren't in one of the standard delivery areas. Prices are very reasonable and delivery is £4.25 (free for orders over £40). With a menu changing regularly in order to ensure seasonality of ingredients, it's worth signing up [online](#) to receive updates and see the full range of dishes on offer prior to placing your order.

Barnes Open Gardens in aid of FiSH Neighbourhood Care

The Barnes Open Gardens takes place on Sunday 15 May from 1 to 6pm.

FiSH Neighbourhood Care's popular Barnes Open Gardens return this month with an attractive collection of Barnes gardens, including locations in Castelnau, Cleveland Gardens, The Crescent, Elm Bank Gardens, Lonsdale Road, Gerrard Road, Nassau Road and Melville Road plus the Bowling Green at The Sun Inn.

Teas and Refreshments will be served at St Mary's in Church Road and there will be a Pimm's tent in Elm Bank Gardens. Garden enthusiasts taking refreshments at St Mary's will also be able to tap into garden advice from Auntie Planty, aka Valerie Munro, the renowned horticulturist who will be on hand to dispense useful tips.

Tickets are priced at £10 per person with under 16's going free. Tickets are also available from the FiSH Office Barnes Green Centre (SW13 9HE) or from the FiSH desk at St Mary's Church in Church Road (SW13 9HL) on the day.

Book your tickets [HERE](#)



Everyone purchasing tickets will be forwarded an event guide ahead of the event. This contains the map and list of all the gardens featured, which may be visited in any order. To help everyone visit as many gardens as possible, FiSH minibuses will provide a free shuttle bus service around the route.

Find out more about the event [HERE](#)



The Da Vinci Code

By Dan Brown, adapted by Rachel Wagstaff and Duncan Abel
Simon Friend at Richmond Theatre, then on tour until 12th November

It is hard to overstate the sheer size of the phenomenon that was *The Da Vinci Code* when the book was first released in 2003. It ... was ... everywhere!

The interest in the 'ymbologist' professor might not be as intense as it once was, but it never really went away either. Whatever you might think of his prose, author Dan Brown does have an incredible knack for weaving engaging narratives with twists and turns, using art history, myth and conspiracy theories to keep the reader engaged. This makes *The Da Vinci Code* an impressively ambitious story to bring to the stage, with its chases, grand locations and travelling between countries. Director Luke Sheppard and his team rise to this challenge, with a sleek and flexible set, making excellent use of movement and projection to propel the story. There is pulsating electronic music throughout, reminiscent of a ninety heist movie, which quite effective in setting the mood.



When it comes to the script, however, there are clunky moments of heavy exposition that hamper the building of tension needed to make the piece sing. It never feels dangerous or tense. Indeed throughout most of the play, Langdon (played suitably sheepish by a charming Christopher Harper) seems pleasantly fascinated by the whole ordeal. The scene-stealer is easily Danny Jones-Jules (Cat in *Red Dwarf*) who brings most of the energy needed to make the play work with his turn as Sir Leigh Teabing.

The company makes an admirable attempt to transfer the story of *The Da Vinci Code* to the stage. However, the production can't overcome the inherent weaknesses of its original source material. Paired with the distinct loss of tension and narrative drive that made the book such a perfect holiday page-turner in the first place, makes this adaptation fall a bit flat.



Melissa Syversen's review at www.markaspen.com/2022/05/04/da-vinci-code

Photography by Johan Persson

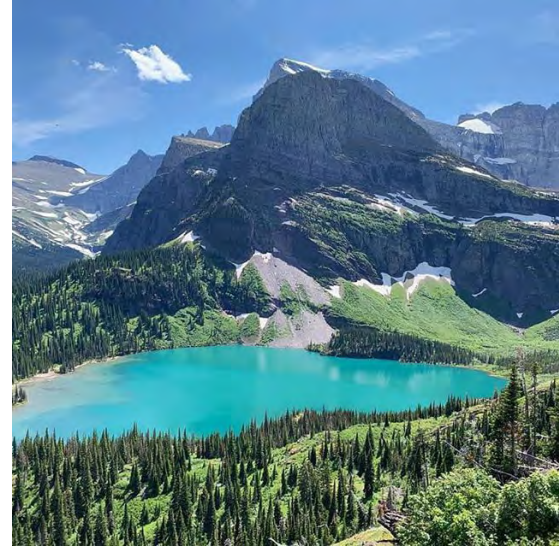
Glacier Lake

by Andrew Cartmel

Thursday Theatre at the OSO Arts Centre, Barnes until 8th May

Described as a 'thriller with hot topicality', *Glacier Lake* is set in the remote, lakeside escape of Otto and his daughter, Sandy.

A modest set comprises a sofa and coffee table and upstage a painting of what is assumed to be the house itself, set in its remote and idyllic glacial surroundings. This painting is used throughout the play to demonstrate the passage of time. Its lighting changes subtly from bright sunshine, through the duskiess of late afternoon, into the darkness of night-time. Serving as a cut to an external camera-shot of the cottage, this simple concept is cleverly conceived and highly effective, as are the sound effects and the music which accompanies the scene transitions.



During a telephone conversation Otto (Colin Hill) glances out of the cottage window and sees his daughter, Sandy (Sadie Pepperrell) struggling in the nearby lake. He runs outside to save her but, to his relief, discovers that she has been brought to safety by Daniel (Jamie Hutchins) who is staying with them in order to lie low from some unsavoury characters.

In plays of this genre, one becomes attuned to triggers, beats or plot-hints suggested throughout the early scenes, often helping to layer the mystery and intrigue, in the expectation that their importance would soon become more apparent ... disappointingly, however, they do not!

As the story unfolds, we learn that Otto and Daniel's father were colleagues, both of whom had worked for a large oil producer and had been involved in falsely convincing the world that climate change was hoax. A group of vigilantes have formed to take their revenge on the children of those that were involved in the deceit (Daniel and Sandy among them).

It is a thought-provoking concept but, unfortunately, the script lacks the complexity and depth required to do it justice. That said, the play has pace and strong performances from each of the three actors keep the audience engaged. It is certainly worth going to see and, with tweaking, would have all the makings of a truly enthralling thriller.

Read David Stephens' review at

www.markaspen.com/2022/05/04/glacier-lake

Photography by Conrad Blakemore





India Gate

by Howard Shepherdson and Tajinder Sindra

The Questors Theatre and Punjabi Theatre Academy at the Judi Dench Playhouse, Ealing until 7th May, then on tour.

For over four hundred years the history of India and Britain has been inextricably linked. However, the relationship has not always gone smoothly. *India Gate* concentrates on two such periods of history, the massacre in Amritsar in the Punjab in April 1919 and the events leading up to Indian Independence Day in August 1947.



The story is told largely through the eyes of two people, Lady Emily Lutyens (whose complexity is outstandingly portrayed by Clare Cooper), recalcitrant wife of the famous architect Sir Edwin Lutyens; and Udham Singh, a Sikh zealot, who became an assassin (an imposing interpretation Rajeev Soni). From these foci, the lives and the views of their family, colleagues and friends also add to the examination of the times and mores of the human beings behind momentous turning points in history

With multiple scenes changing in location and time (from 1877 to 1947) there is much to get through and writer-director Howard Shepherdson crams a lot of information in there. The text is given authenticity by the Punjabi dialogue in passages written by Tajinder Sindra, the Artistic Director of PTA and assistant director of *India Gate*. Sindra is not afraid to use humour to good effect. “You can’t get a goody curry in London; it will never catch on in this country” observes one of his Indian characters on a trip to London in 1929 to seek Lady Lutyens’ help in lobbying for home rule.

India Gate uses snapshots into the past to extract the diverse perspectives of the seventy years leading to Indian independence, from British and Sikh viewpoints. The co-operation of two talented theatre companies makes for interesting insights and intriguing realisations on what was, what might have been, and what is.

Read Mark Aspen’s review at www.markaspen.com/2022/05/02/india-gate



Photography by Jane Arnold-Forster

NEIGHBOURLY MAYHEM AT THE MARY WALLACE THEATRE

Daggers are out and lines drawn in the sand in Yasmina Reza's **GOD OF CARNAGE**, due to open at the Mary Wallace Theatre on May 28th. In this multi-award-winning comedy two couples meet to discuss strategy when it appears that their children have been fighting. Oil on troubled waters? Or fuel to the fire?



GOD OF CARNAGE plays till June 4th - evenings at 7.45 with 3pm matinee on Sunday, May 29th.

Further information and booking details at

www.richmondshakespeare.org.uk

The Mary Wallace Theatre on Twickenham's Embankment, TW1 3DU is situated between St Mary's Church and the Barmy Arms.



Richmond Shakespeare Society



Spring Art Fair at The Landmark Arts Centre

The Spring Art Fair will showcase the work of over 70 artists with something to suit all tastes and all budgets.

There will be prints and paintings available to buy with prices ranging from £50 for prints all the way up to £4,000 for some originals.

The Spring Art Fair will run from Friday 20 May to Sunday 22 May 2022. On Friday, the fair will open from 1 to 8pm while on Saturday and Sunday it will open from 10am to 4pm. Admission costs just £5, £4 for concessions with under 16's and LAC members going for free.



For an early viewing of the catalogue list of exhibitors and for more information, visit the Landmark Arts Centre website [HERE](#)

WIZ TALES - GREENLAND

Teresa Read



Following on from last week's article on Denmark ...

Greenland, the largest island in the world, is a self-governing overseas administrative division of the Kingdom of Denmark. The island, which is in northern North America between the Arctic Ocean and the North Atlantic Ocean, is northeast of Canada.

Greenland's Northeast National Park is the largest National Park in the world. Wildlife found in the park includes the arctic fox, musk ox, polar bear, reindeer and ptarmigan. Marine mammals include seals, walruses and whales.

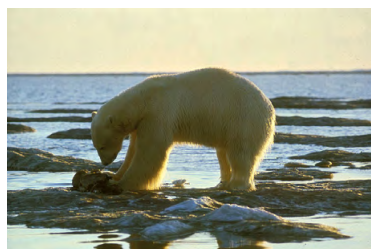


NOAA (Nautical Oceanic and Atmospheric Administration)

Ilulissat Icefjord, on the west coast of Greenland, is on the World Heritage List.

The first people arrived in Greenland around four to five thousand years ago crossing from Canada. Erik the Red, a Norwegian who had been banished from Iceland, discovered Greenland in 982 starting a settlement in 986.

A Danish colony was founded in 1721 with colonial status ending in 1953 when Greenland became part of the Kingdom Denmark.



More information about Greenland:

<https://worldinfozone.com/facts.php?country=Greenland>

Photographs Greenland Tourism and US Fish and Wildlife Service

Events coming up in Church Street Twickenham

By Shona Lyons



Come and sample the delicious French Produce and French styles at the return of our popular & authentic French Market. Coming to Church Street Sunday the 15th of May from 10am until 4pm & Monday the 16th from 9am until 5pm. We hope you will come and enjoy the market coming all the way from Normandy. You will also be able to enjoy our famous Church Street hospitality at our lovely unique shops, cafes, pubs, and restaurants, where you can have a drink, a snack or meal and make a day of it, with a visit to the famous York House gardens on our doorstep and the iconic Naked Lady statues, or take a walk to the river, to have an ice cream or feed the ducks.

Church Street Celebrates

70 YEARS
EIR
1952 PLATINUM JUBILEE 2022
Sun 5 June 12 until 6pm

CRAFT STALLS FACE PAINTING AL FRESCO DINING
 PUNCH & JUDY STREETFOOD GIANT CHESS
 LIVE MUSIC BALLOON MODELLING

On Sunday the 5th of June, please celebrate the Platinum Jubilee with us in Church Street Twickenham. As well as our many fabulous Hospitality Traders all getting into the Jubilee Spirit with Al Fresco Dining and Summer refreshments, there will also be a Craft Fair with local crafters, live music from local bands, street-food, balloon modelling, Punch & Judy & face painting! We will have lots of local crafters with their hand-crafted designs, home ware, jewellery and gifts and the lovely Perrin Jazz Collective will be back in Church Street again with their popular tunes. Ben & Emma from Jawbone Brewery will also be paying us a visit so you can sample their fantastic Twickenham Craft Beers directly from the brewers themselves.

TRAVELLER'S TALES 122

A CORNER OF THE COTSWOLDS

Doug Goodman takes an Easter break in the Cotswolds

Stratford upon Avon was only a few miles away but as it was Easter weekend the thought of crowds of tourists in the historic town made it sensible to find a quiet spot in The Cotswolds. Near to Long Marston, our base for four days, were the gardens of Kiftsgate and Hidcote, the town of Chipping Campden and plenty of rural walks. In Long Marston is the 14th century church of St. James with a decorated Gothic nave and chancel. Rebuilt in the 19th century it retained its attractive silhouette. The Barn is a vast antique centre at Nickleton and took an hour to explore and to avoid buying several things I always wanted.

The Cotswolds is a designated Area of Outstanding Natural Beauty and, after The Yorkshire Dales and Lake District, is the third largest protected landscape in England. Its 787 square miles extend from near Stratford in the north to South of Bath passing through the counties of Oxfordshire, Gloucestershire, Wiltshire, Somerset, Worcestershire and Warwickshire. The region's bedrock of Jurassic Limestone is quarried to provide the beautiful golden coloured stone for buildings and walls which is such a prominent feature of The Cotswolds.



Cotswolds Vista



St. James The Great



Kiftsgate Court

SPACIOUS GARDENS

Kiftsgate Court Gardens is a family-owned estate set on the edge of the Cotswolds escarpment. Flower-lined paths lead to views over hills and fields and provide a peaceful and relaxing atmosphere. The upper gardens by the house have been planted to show off beautiful colour-schemes while the lower area is sheltered and seems more like a foreign, warmer region. Created in the 1920s by the grandmother of the present owner, three generations of women gardeners have been responsible for the planning and upkeep of Kiftsgate. A new addition is the water garden which contrasts well with the profusion of flower beds.

Hidcote is a National Trust property and was designed by Major Lawrence Johnson in phases between 1907 and 1938. Set in the rolling hills of the Cotswolds the house dates from the 17th century. The garden covers an area of ten and a half acres and provided its creator with an 'empty canvas' on which he could design walks, vistas and beds for the exotic plant species collected during world-wide expeditions.



Wild Wood



Local Beer from the Noel Arms



Chipping Camden



Great Walking Country

CHIPPING CAMPDEN

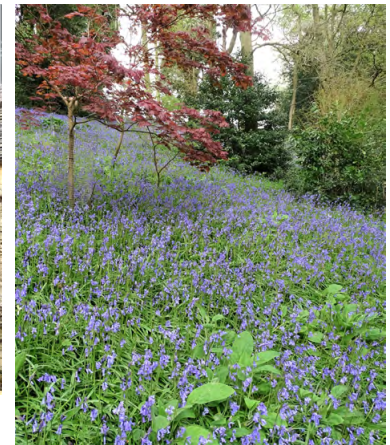
Between visits to admire beautiful gardens a pub lunch-break was required. Nearby Chipping Campden has a number of pubs and hotels including the Lygon Arms. Almost opposite the Market Hall, with its worn paving stones and for centuries where traders gathered, is the Noel Arms where a delicious ploughman's lunch was served in the sunny courtyard. Local beer brewed in Hook Norton complimented the meal. This ancient wool town, with its terraces of stone houses, thatched cottages and historic buildings dating back to the 14th century, was the centre of the arts and crafts movement. 'Chipping' found in many place names derives from the old English word 'ceping' meaning market or market place. A sign post in the town centre points to some of the area's footpaths with the 102 miles of the Cotswolds way ending in Chipping Campden. The region lives up to its title of Outstanding Natural Beauty and offers plenty to do during a short break. On an easy-traffic day the drive from Twickenham takes about two and a half hours.



Courtyard Colour



Hidcote House



Profusion of Bluebells

Kiftsgate Court is near Chipping Campden. www.kiftsgate.co.uk

Hidcote House is also near Chipping Campden and very close to Kiftsgate Court. It's National Trust. www.nationaltrust.org.uk/hidcote

The Noel Arms in Chipping Campden is a pub and hotel. www.noelarmshotel.guestreservations.com

Now Here`s Some Good News!!!!

Travel news by Bruce Lyons

In bygone times, that is Pre-Pandemic, we always had a flurry of Spring Lates. But it was looking unlikely this year – that is till now!



Just in time you might say for the May School Break and Beyond. The first to appear are May and June Villas. A large villa with pool in the South of France (occupancy up to 12) can be had for a small group (6) deal for Only £1550 – this in South West France – Armagnac.



But there are villas in early May with amazing offers; Croatia, Mallorca, Corfu, Algarve, Menorca, Lefkas, Cyprus, Crete, Rhodes, Costa Blanca.

Soon I expect we will see some 2 weeks for the price of one around these times too. One thing, don't ask for the Seville area over the last week of May – Ranger fans have grabbed the lot for the European Final after last night's match, so avoid the Andalucian Circle that week, it might be mixed with a dash of Tartan!

But if you can get away in May, June looks for a good deal, there should be something for all and great quality too! As I write the last of the Covid Protocols are being withdrawn & New Zealand is fully open now and in June the Japanese reckon to lift the Covid barriers.

Already the Asian triangle – Laos, Cambodia and Vietnam are welcoming tourists, and the Adventure companies have small group tours with local guides. If you are looking for well-priced summer offers, many European Destinations are already hard to find at affordable prices look at newly emerging Destinations late to drop the protocols Like Tunisia, Morocco and Thailand these destinations still have value offers for the summer holidays.



STRAWBERRY HILL HOUSE FLOWER FESTIVAL 2022

In association with Flowers from the Farm

23 – 25 September 2022

The Strawberry Hill House Flower Festival returns for a fourth successive year on 23rd-25th September with a spectacular showcase of the very best of British-grown flowers, foam-free sustainable floristry and the design creativity of the UK's leading floral designers.

Curated by Leigh Chappell and Janne Ford, the Flower Festival is produced for the first time this year in association with Flowers from the Farm, the award-winning membership organisation championing artisan growers of local, seasonal British cut flowers.



With vividly decorated or gilded rooms, illuminated by beautifully shaped windows, complete with stained glass, Strawberry Hill House in Twickenham offers a breath-taking setting for the three-day Flower Festival. Shining a spotlight on the beauty, variety and versatility of the fresh and dried flowers and foliage's cultivated by British flower farmers, the Flower Festival gives free creative rein to the invited florists to share their artistry, expertise and passion for sustainable floral design in design installations and floral demonstrations throughout the remarkable Gothic manor house.

The Flower Festival has developed a devoted following and become a highlight in the event diary at Strawberry Hill House, as festival manager, Claire Leighton explains: *"Visitors were amazed. I spotted one visitor looking at the stairs and saying, 'I didn't realise flowers could look like this!'"*

Flowers from the Farm Co-Chair, Meg Edmonds, says: *"We see a perfect synergy between the creative vision of the*



Strawberry Hill House Flower Festival and Flowers from the Farm. The Flower Festival presents a unique opportunity to showcase the talents of our farmer-florists and the beauty of local, seasonal British cut flowers in creative floral design.”

The Flower Festival features designs by floral designers and farmer-florists including Electric Daisy Flower Company, Frances & Rose, Botanical Tales, Wild Bunch, Nettlewood Flowers, Bayntun Flowers, Aelisabet Flowers, Lunabloom, Queen of the Meadow, Smokebush Floral Design, Twisted Sisters, Viridis Flowers, Lunaria, Myrtle and Smith, The Divine Flower Company, Joanne Truby, and Xyris Botanicals. Every stem of cut flower material at the Strawberry Hill House Flower Festival has been grown for the designers by members of Flowers from the Farm.



Throughout the Flower Festival, guided tours of the transformed House will be available, including an evening of tours and a much-anticipated floral demonstration on Friday, 23rd September by acclaimed florist and sustainable floristry advocate, Shane Connolly. Shane holds Royal Warrants of appointment to HM The Queen and HRH The Prince of Wales and is possibly best known for decorating Westminster Abbey with an avenue of growing trees for the wedding of the Duke and Duchess of Cambridge. Shane says: *“We floral designers owe a debt of gratitude to Nature and the planet; so, we must create designs that are beautiful without and within. Designing sustainably does not stop creativity and magic, so it’s time we stopped hiding behind the pretty flowers, acknowledge the huge environmental issues, and show how it can be done, with festivals like The Strawberry Hill House Flower Festival.”*

There will be sessions showing visitors how they too can adopt more sustainable methods of flower arranging, plus a chance to quiz Strawberry Hill’s own gardening team about your horticultural hiccups; from reluctant rhododendrons to drooping dahlias and glean advice on how to grow gorgeous geraniums or impressive Italian Asters.

Visitors to the Flower Festival should make time to wander around the wonderful grounds. Horace Walpole was a keen gardener, writing the hugely influential essay *The History of the Modern Taste in Gardening* which was first published in 1780. Walpole’s five-acre garden has been faithfully restored to much of its original appearance, with a variety of beds, borders, walks, groves, lawns and woodland that would be wholly familiar to him today.

Tickets for the Flower Festival are available online now. Prices, tour and talk times can be found at www.strawberryhillhouse.org.uk/flower-festival/

The participating florists and growers will also be sharing blogs, tips, photographs and other content across social media, leading up to and during the festival, using the hashtag: #StrawberryFlowerFestival

Lucy walks 100km to shine a light on coeliac disease and fundraise for Coeliac UK

A medical student who was recently diagnosed with coeliac disease is set to walk 100 kilometres in and around **Richmond** to raise money for charity Coeliac UK, all while maintaining her busy lectures and placement at Kings College Hospital.

Lucy Stiles, age 20, will swap her stethoscope for her stepometer during Coeliac UK Awareness Week, which runs Monday 9 to Sunday 15 May 2022. She is one of many across the country taking part in the charity's #ShineALightOnCoeliac challenge and because 1 in 100 people have coeliac disease, the fundraising theme is '100' with an overall goal to raise £100,000.

Lucy was diagnosed with the serious autoimmune condition after many months of feeling constantly exhausted and suffering with severe abdominal pain, nausea and diarrhoea. She explains: *"I have missed vital university lectures and parts of my placement as well as social events as I have been unable even to get out of bed some days. I've had months of appointments, tests, scans and finally I have been diagnosed."*

"It was a shock to learn I could not eat gluten, which I came to learn is in nearly everything! Food is such a big part of my life and I worried I would never enjoy it again. I was starting to mourn my old life. But with Coeliac UK's support, through its helpline, blogs and apps, I have changed my outlook and am now feeling so much more positive as well as physically better. No more missed lectures!"



Lucy's 100km challenge is the distance of nearly two and a half marathons – and she is eager to complete this amongst her medical commitments, both to raise awareness and to raise funds.

Helen North is Director of Fundraising & Commercial Services and says: *"We are so thankful to Lucy for sharing her story and raising funds through her 100km walk. Only 36% of people with coeliac disease are diagnosed and Coeliac UK is working hard to change this through our #ShineALightOnCoeliac campaign."*

"The symptoms of coeliac disease can be easily confused with those of other conditions, which is why Coeliac UK Awareness Week is so important. If more people are aware of the symptoms, more people will get a diagnosis earlier, reducing the precious time stolen by this debilitating disease."

"Undiagnosed coeliac disease can have a devastating impact on people's lives. But there is good news – once diagnosed, it can be managed with a gluten free diet and very soon the body begins to repair the gut lining and so symptoms reduce and for most will stop fairly quickly. But it's important to note that gluten must remain within the diet throughout the diagnosis process to avoid a possible false negative result. "Receiving a diagnosis can be unsettling if not scary for some, but there is so much support available from Coeliac UK and every day we hear about how our guidance, information and support has helped to increase the quality of life for people and their whole family."

To support Lucy's 100km walk, and help Coeliac UK reach its fundraising goal of £100k, please donate here <https://coeliacuk.enthuse.com/pf/lucy-stiles>.

14.9 million excess deaths were associated with the COVID-19 pandemic in 2020 and 2021

New estimates from the World Health Organization (WHO) show that the full death toll associated directly or indirectly with the COVID-19 pandemic (described as “excess mortality”) between 1 January 2020 and 31 December 2021 was approximately 14.9 million (range 13.3 million to 16.6 million).

“These sobering data not only point to the impact of the pandemic but also to the need for all countries to invest in more resilient health systems that can sustain essential health services during crises, including stronger health information systems,” said Dr Tedros Adhanom Ghebreyesus, WHO Director-General. “WHO is committed to working with all countries to strengthen their health information systems to generate better data for better decisions and better outcomes.”

Excess mortality is calculated as the difference between the number of deaths that have occurred and the number that would be expected in the absence of the pandemic based on data from earlier years.

Excess mortality includes deaths associated with COVID-19 directly (due to the disease) or indirectly (due to the pandemic’s impact on health systems and society). Deaths linked indirectly to COVID-19 are attributable to other health conditions for which people were unable to access prevention and treatment because [health systems were overburdened by the pandemic](#).

The estimated number of excess deaths can be influenced also by deaths averted during the pandemic due to lower risks of certain events, like motor-vehicle accidents or occupational injuries.

Most of the excess deaths (84%) are concentrated in South-East Asia, Europe, and the Americas. Some 68% of excess deaths are concentrated in just 10 countries globally. Middle-income countries account for 81% of the 14.9 million excess deaths (53% in lower-middle-income countries and 28% in upper-middle-income countries) over the 24-month period, with high-income and low-income countries each accounting for 15% and 4%, respectively.

The estimates for a 24-month period (2020 and 2021) include a breakdown of excess mortality by age and sex. They confirm that the global death toll was higher for men than for women (57% male, 43% female) and higher among older adults. The absolute count of the excess deaths is affected by the population size. The number of excess deaths per 100,000 gives a more objective picture of the pandemic than reported COVID-19 mortality data.

“Measurement of excess mortality is an essential component to understand the impact of the pandemic. Shifts in mortality trends provide decision-makers information to guide policies to

reduce mortality and effectively prevent future crises. Because of limited investments in data systems in many countries, the true extent of excess mortality often remains hidden,” said Dr Samira Asma, Assistant Director-General for Data, Analytics and Delivery at WHO. “These new estimates use the best available data and have been produced using a robust methodology and a completely transparent approach.”

“Data is the foundation of our work every day to promote health, keep the world safe, and serve the vulnerable. We know where the data gaps are, and we must collectively intensify our support to countries, so that every country has the capability to track outbreaks in real-time, ensure delivery of essential health services, and safeguard population health,” said Dr Ibrahima Socé Fall, Assistant Director-General for Emergency Response.

The production of these estimates is a result of a global collaboration supported by the work of the [Technical Advisory Group for COVID-19 Mortality Assessment](#) and country consultations.

This group, convened jointly by the WHO and the United Nations Department of Economic and Social Affairs (UN DESA), consists of many of the world’s leading experts, who developed an innovative [methodology](#) to generate comparable mortality estimates even where data are incomplete or unavailable.

This methodology has been invaluable as [many countries still lack capacity for reliable mortality surveillance](#) and therefore do not collect and generate the data needed to calculate excess mortality. Using the publicly available methodology, countries can use their own data to generate or update their own estimates.

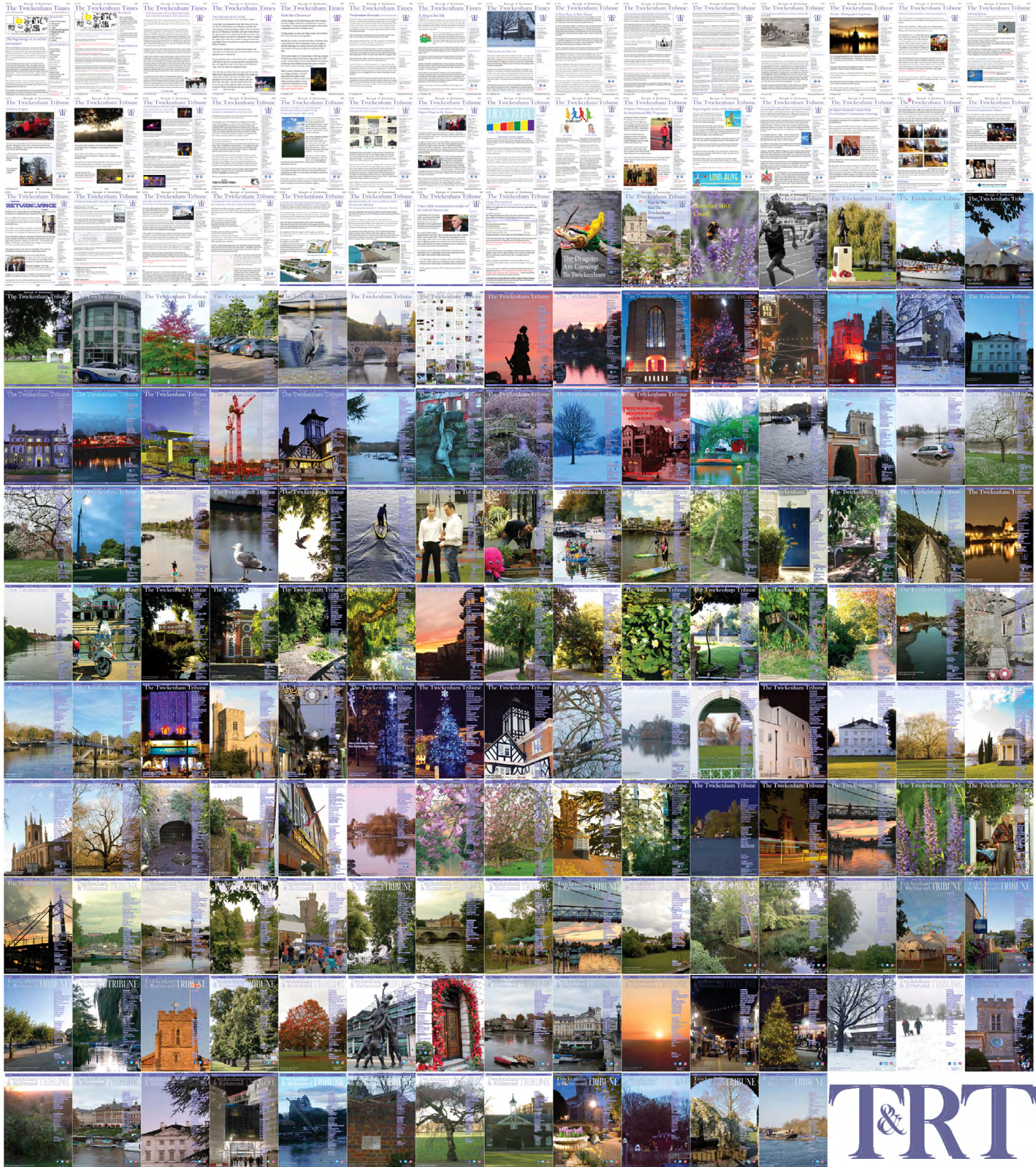
“The United Nations system is working together to deliver an authoritative assessment of the global toll of lives lost from the pandemic. This work is an important part of UN DESA’s ongoing collaboration with WHO and other partners to improve global mortality estimates,” said Mr Liu Zhenmin, United Nations Under-Secretary-General for Economic and Social Affairs.

Mr Stefan Schweinfest, Director of the Statistics Division of UN DESA, added:

“Data deficiencies make it difficult to assess the true scope of a crisis, with serious consequences for people’s lives. The pandemic has been a stark reminder of the need for better coordination of data systems within countries and for increased international support for building better systems, including for the registration of deaths and other vital events.”



287 editions of the **Twickenham & Richmond Tribune** online - Lots to read: News, Reviews, History, Sports and On-going Sagas in the Borough of Richmond upon Thames



Half Page

Quarter Page
Landscape

Quarter Page Portrait

Eighth Page

Eighth Page
Landscape

Example advert sizes shown above

Thousands read The Twickenham & Richmond Tribune

If you are reading this you could be advertising your business with
The Twickenham & Richmond Tribune. Community rates are
available

Contact: advertise@TwickenhamTribune.com

View ad details at www.TwickenhamTribune.com/advertise

Contact

contact@TwickenhamTribune.com
letters@TwickenhamTribune.com
advertise@TwickenhamTribune.com



Published by:

Twickenham & Richmond Tribune (in association with World InfoZone Limited)

Registered in England & Wales

Reg No 10549345

The Twickenham Tribune is registered with the ICO under the Data Protection Act, Reg No ZA224725

©Twickenham & Richmond Tribune. All rights reserved. No part of this publication may be used or reproduced without the permission of Twickenham & Richmond Tribune. While we take reasonable efforts, this online newspaper cannot be held responsible for the accuracy or reliability of information. The views and opinions in these pages do not necessarily represent those of The Twickenham & Richmond Tribune.

[Terms & Conditions](#)